

West Yellowstone

SUMMER MAP 2014

RESTAURANT KEY

- P** Parking
- Member Chamber of Commerce** ★ **Non Member**
- Arby's 646-7101
 - Arrowleaf 646-9776
 - Bar-N-Ranch 646-0300
 - Bear Country
 - Beartooth
 - Book Peddler 646-9358
 - Buckaroo Bills
 - Bullwinkle's 646-7630
 - Café Madriz 646-9245
 - Campfire Lodge 646-7258
 - Canton Express
 - Canyon Street 646-7548
 - China Fun
 - Chinatown
 - Dairy Queen 646-4106
 - Ernie's 646-9467
 - Geyser Grill
 - Grizzly Claw
 - Hi Country 646-9344
 - Kentucky Fried Chicken 646-9011
 - Kirkwood Grill 646-7200
 - Kiwi
 - Lakeside Lookout
 - Madison Crossing 646-7621
 - McDonald's
 - Old Town
 - Outpost
 - Pete's Pizza 646-7820
 - Red Lotus
 - Red Onion Deli
 - Running Bear 646-7703
 - Serenity Bistro 646-7660
 - Slippery Otter Pub 646-7225
 - SmokeJumper Cafe
 - Subway
 - Taco Bus
 - The Branch 646-7365
 - The Buffalo Bar 646-1176
 - The Gusher 646-9050
 - Three Bear 646-7811
 - Timberline 646-9349
 - Trapper's 646-9375
 - WHR BBQ Barn
 - Wild West 646-4400
 - Woodside



A **Park Tours**
Winter/Summer
Lodging Packages
www.YellowstoneVacations.com
406.646.9564
 415 Yellowstone Ave

Map Produced by West Yellowstone Chamber of Commerce
 406-646-7701 | www.destinationyellowstone.com
 Designed & printed by
 QuickPrint of West Yellowstone www.quickprintwy.com
 All rights reserved

B **BUD LILLY'S**
TROUT SHOP
Fly Fishing Gear
Guided Trips
Outdoor clothing & footwear
 39 Madison Ave. 406.646.7801 Open 7 Days a week

C **SUPER SAVE CONOCO**
CONVENIENCE STORE
 Groceries • Beer • Ice • Ice Cream
 Souvenirs • Lottery Tickets
406-646-9465
 Open 6 AM **CONOCO**
On U.S. 20 at Firehole & Dunraven

D **Join us at the**
Branch Restaurant & Bar
 Family-friendly & dishes infused with local flavor.
 Full bar featuring regional microbrews & premium liquors.
 Open year-round for breakfast, lunch, happy hour & dinner.
Breakfast | Lunch | Dinner
 Corner of Yellowstone & Electric • Next to the Holiday Inn • 406.646.7365

E **EAGLE'S STORE**
 WEST YELLOWSTONE, MONTANA
 Outdoor Apparel & Footwear
 Western Wear, Boots & Hats • Jewelry
 Camping Equipment • Fishing Tackle • Soda Fountain
 Corner Of Yellowstone & Canyon.
 406-646-9300

F **Three Bear Restaurant**
 Serving Breakfast & Dinner
 7 days a week
 Try our specialties in Elk & Bison
406-646-7811

G See LIVE • Grizzly Bears
 • Wolves • Bird-of-Prey Exhibits • Kids Programs
 • Safety in Bear Country
 • Wolf Enrichment • YNP Ranger Talks • Bear Museum
OPEN EVERY DAY
Grizzly & Wolf Discovery Center
 201 S. Canyon 646-7001 www.grizzlydiscoveryctr.org

L **Market PLACE**
A Full-Service Supermarket and Liquor Store
 22 Madison Avenue
 406-646-9600
 DELI FRESH BAKED GOODS DRY ICE • ATM TAKE-OUT FOODS
AMPLE PARKING

K **RadioShack**
DEALER
 You've Got Questions - We've Got The Answers!
 Personal Electronics • Cell Phones & Accessories
 Digital Cameras • Memory Cards • Satellite Radios
 Computer Supplies
131 Dunraven 406-646-5121

J **YELLOWSTONE HORSES**
 Family style rides in the remote wilderness of the EAGLE RIDGE RANCH located just 30 minutes from Yellowstone National Park
800.709.1358
\$10 OFF COUPON
 Rides include free boating & fishing in the private ponds & lakes of the EAGLE RIDGE RANCH
www.yellowstoneworld.com

I **Ernie's**
Bakery and Deli
 406 Highway 20
West Yellowstone, Montana
 Unbeatable Box Lunches & Deli Sandwiches
 Full Breakfast
 Free Internet
406-646-9467 www.Ernie'sBakery.com
 Call ahead orders encouraged

H **SeeYellowstone.com**
Tours of Yellowstone
 • FREE Local Pick-up & Drop-off
 • 'Picnic in the Park' included with every tour
800-221-1151



WEST YELLOWSTONE AREA TOURING MAP

Yellowstone Area Construction

Within the Parks

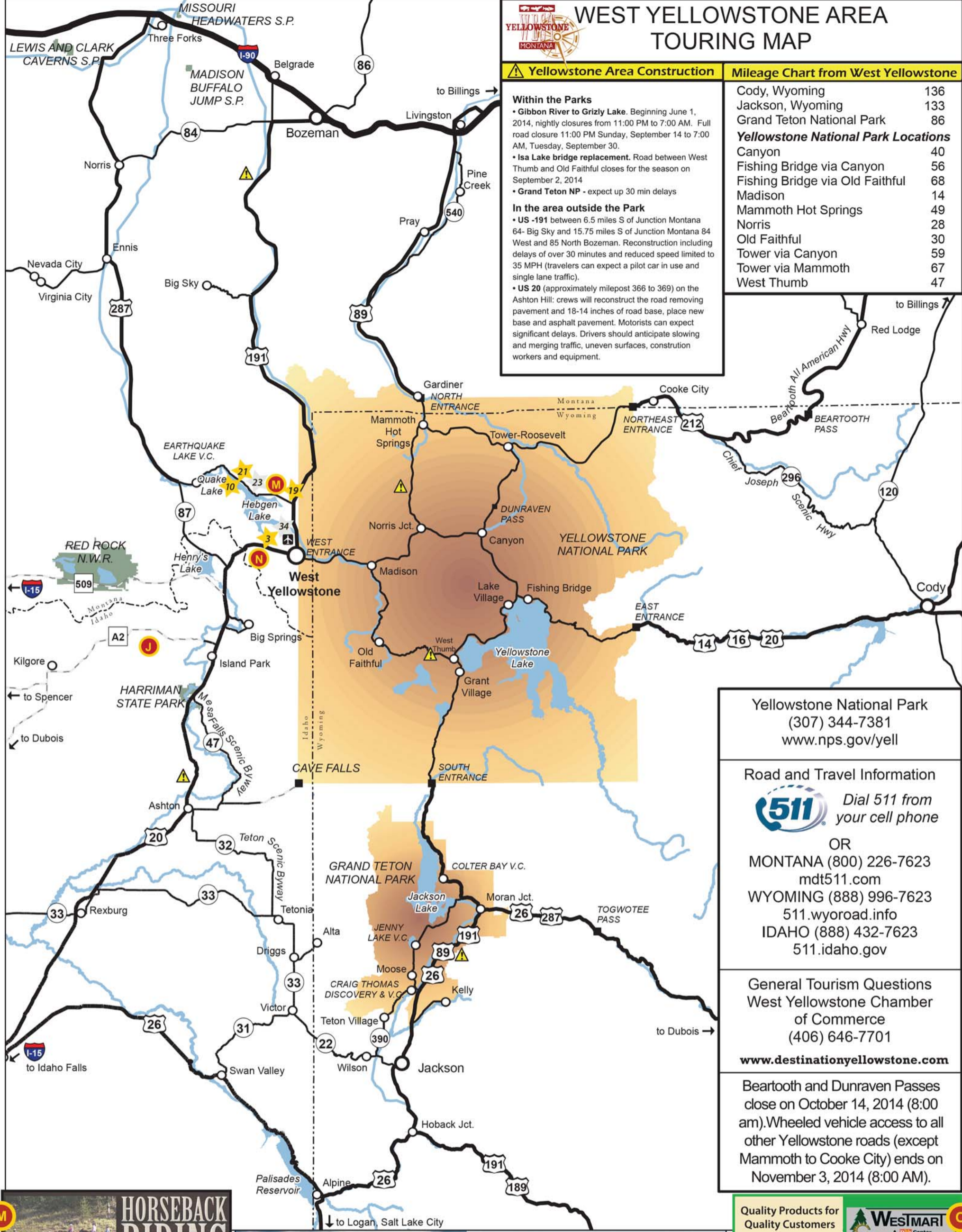
- **Gibbon River to Grizzly Lake.** Beginning June 1, 2014, nightly closures from 11:00 PM to 7:00 AM. Full road closure 11:00 PM Sunday, September 14 to 7:00 AM, Tuesday, September 30.
- **Isa Lake bridge replacement.** Road between West Thumb and Old Faithful closes for the season on September 2, 2014
- **Grand Teton NP** - expect up 30 min delays

In the area outside the Park

- **US -191** between 6.5 miles S of Junction Montana 64- Big Sky and 15.75 miles S of Junction Montana 84 West and 85 North Bozeman. Reconstruction including delays of over 30 minutes and reduced speed limited to 35 MPH (travelers can expect a pilot car in use and single lane traffic).
- **US 20** (approximately milepost 366 to 369) on the Ashton Hill: crews will reconstruct the road removing pavement and 18-14 inches of road base, place new base and asphalt pavement. Motorists can expect significant delays. Drivers should anticipate slowing and merging traffic, uneven surfaces, construction workers and equipment.

Mileage Chart from West Yellowstone

Cody, Wyoming	136
Jackson, Wyoming	133
Grand Teton National Park	86
Yellowstone National Park Locations	
Canyon	40
Fishing Bridge via Canyon	56
Fishing Bridge via Old Faithful	68
Madison	14
Mammoth Hot Springs	49
Norris	28
Old Faithful	30
Tower via Canyon	59
Tower via Mammoth	67
West Thumb	47



Yellowstone National Park
(307) 344-7381
www.nps.gov/yell

Road and Travel Information
511 Dial 511 from your cell phone
OR
MONTANA (800) 226-7623
mtd511.com
WYOMING (888) 996-7623
511.wyroad.info
IDAHO (888) 432-7623
511.idaho.gov

General Tourism Questions
West Yellowstone Chamber of Commerce
(406) 646-7701
www.destinationyellowstone.com

Beartooth and Dunraven Passes close on October 14, 2014 (8:00 am). Wheeled vehicle access to all other Yellowstone roads (except Mammoth to Cooke City) ends on November 3, 2014 (8:00 AM).

M

HORSEBACK RIDING
AND WESTERN COOKOUTS
800-753-5934
PARADE REST
GUEST RANCH
WEST YELLOWSTONE, MONTANA

N

WILD WEST YELLOWSTONE RODEO
Performances at 8:00 p.m.
Rain or Shine
June 18th through August 30th
(406) 560-6913
WWW.YELLOWSTONERODEO.COM

Come Back to Winter in West Yellowstone MONTANA

Build memories with....

- Experience Winter in Yellowstone National Park: December 15 - March 15
- Yellowstone Ski Festival: Thanksgiving Week
- Christmas Stroll: December
- Sled Dog Races: December, January, February, March
- Kids 'N' Snow: Dec., Jan., Feb., March
- Sledding & S'mores: Nov., Dec., Jan., Feb., March
- Rendezvous Ski Race: March 7, 2015
- World Snowmobile EXPO(25th anniversary): March 13 - 15, 2015

Check on these and other of winter's great events on our Calendar of Events at www.destinationyellowstone.com

Quality Products for Quality Customers

WESTMART
A **REI** Center

100 South Faithful
W. Yellowstone, MT 59758

1-800-598-9378
Fax: 406-646-9579
Web: www.westmart.com

華城飯店
WELCOME TO THE CHINATOWN RESTAURANT
FREE DELIVERY!

OPEN 7 DAYS
Tel: (406) 646-7088
Fax: 646-0625

110 Madison Avenue
West Yellowstone, MT 59758